



Dolphin Whiteboard Assistant Version 2.0

Teacher Guide

This support guide is for the Dolphin Whiteboard Assistant from [Dolphin Computer Access](#). It provides step-by-step instructions to help teachers understand how the Dolphin Whiteboard Assistant works and how to use it confidently in a classroom setting. The guide is designed to help you make the most of Dolphin Whiteboard Assistant, so you can support your vision impaired students as they use SuperNova to access their learning material and integrate accessible reading into your classroom teaching.

Other Guides in this series are:

- Dolphin Whiteboard Assistant - IT Administrator Guide.
This Guide explains the installation and configuration process of the Dolphin Whiteboard Assistant for IT Administrators.
- Dolphin Whiteboard Assistant - Student Guide
This Guide explains how students use SuperNova to connect and view a teacher's whiteboard with the Dolphin Whiteboard Assistant.

As a teacher, we recommend you also study the Student Guide, so you understand the student's setup process. This will ensure you are fully aware of your vision impaired student's assistive technology requirements and will help you prepare your lesson plans.

1. Overview

The Dolphin Whiteboard Assistant provides a simple way for you to remotely share your whiteboard with students who have a vision impairment. Using SuperNova, the students can connect to and view the presentation on their own devices, using the magnification and colour schemes that make it easy for them to follow along at the same pace as their peers.

This Guide explains:

- How to open the Dolphin Whiteboard Assistant.
- How to configure your Dolphin Whiteboard Assistant Settings when using the Different Networks connection method.
- How to configure your Dolphin Whiteboard Assistant Settings when using the Same Network connection method.
- How to start sharing your screen.
- How to stop sharing your screen.

2. How to open the Dolphin Whiteboard Assistant

Once your IT Administrator has installed the Dolphin Whiteboard Assistant onto your computer, an icon of a Dolphin will appear on your Windows Desktop.



You can open the Whiteboard Assistant using this icon at any time, or by typing “Dolphin Whiteboard Assistant” into the Windows Start Menu.

3. Types of connection methods

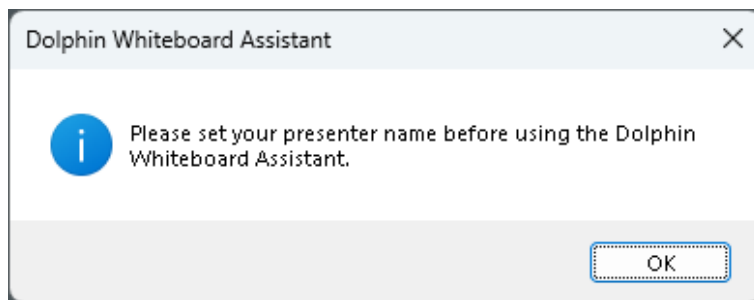
The Dolphin Whiteboard Assistant supports two connection methods:

- **Different Networks** - Used when the teacher and student are connecting over the internet from a different location or use a different network from each other.
- **Same Network** - Used when the teacher and student are on the same Wi-Fi, local network or if they are using a whiteboard connection that has been set before updating to SuperNova v25.01.

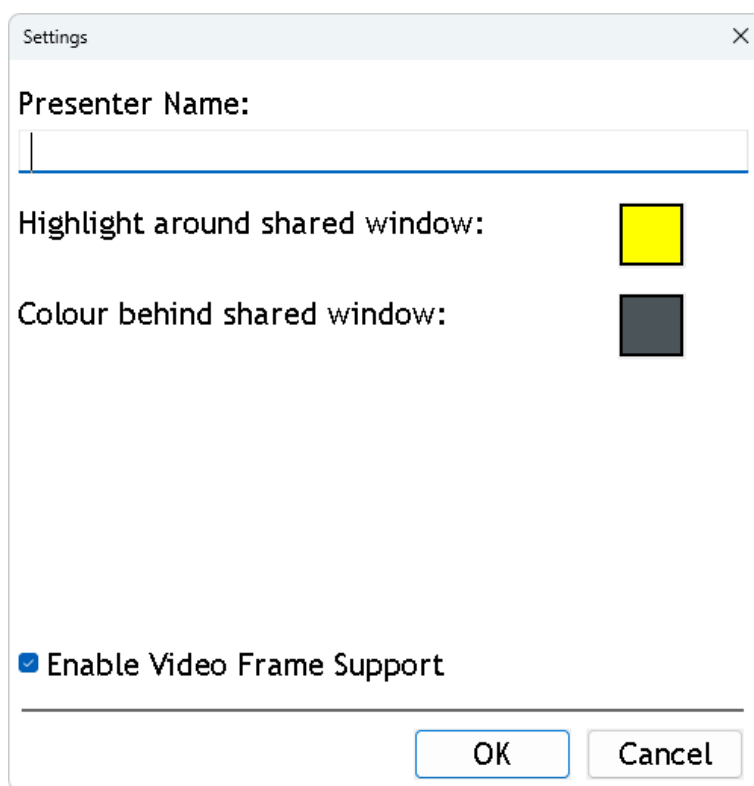
Your IT Administrator will have determined the connection method during the initial setup of the Dolphin Whiteboard Assistant. The chosen connection method then determines the options that appear when you launch the Dolphin Whiteboard Assistant.

4. Different Networks: How to configure your Dolphin Whiteboard Assistant Settings.

The first time you open the Dolphin Whiteboard Assistant using the Different Networks connection, you will be reminded that a presenter name must be set to proceed.



Selecting the "OK" button opens the "Settings" dialog box.

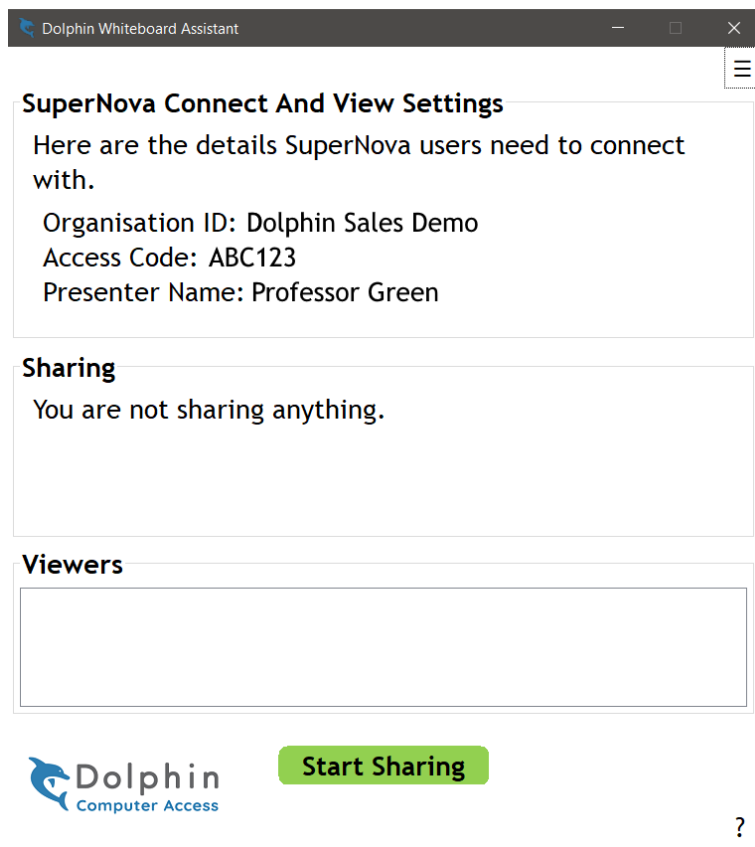


In the "Settings" dialog box, you can do the following:

- Type your Presenter Name. This is a required field. The name you enter is shown to the students to identify your device.
- Select a border colour to highlight the application window being shared. This is only visible on the student's device. This is optional and applies only when you choose to share a specific application window that is not maximised.
- Select a background colour to redact other windows that may appear when you share your screen. This is only visible on the student's device. This is optional and applies only when you choose to share a specific application window.

- Enable Video Frame Support, which optimises performance when streaming, and is selected by default. You should only disable this feature if students are reporting poor viewing quality such as artifacts appearing on their screen.

Selecting the “OK” button will open the main Dolphin Whiteboard Assistant window. Here you will find the information your students need to connect SuperNova to the whiteboard and the “Start Sharing” button that begins the sharing session.

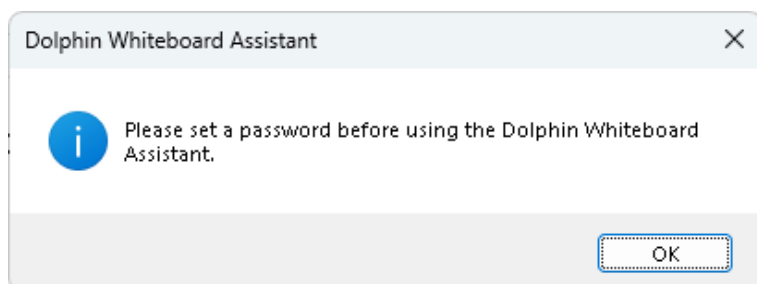


Students need to enter this information into SuperNova. The information only needs to be entered once for students to access all supported whiteboards in your school.

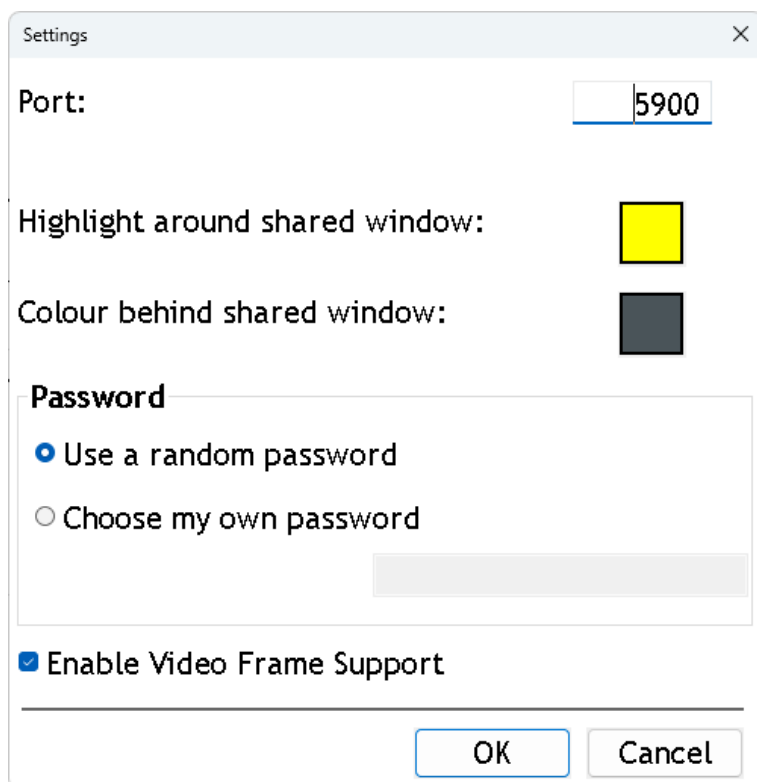
To learn more about sharing, see the section [How to start sharing your screen](#)

5. Same Network: How to configure your Dolphin Whiteboard Assistant Settings.

The first time you open the Dolphin Whiteboard Assistant using the Same Network connection, you will be reminded that a password must be set to share your whiteboard.



Selecting the “OK” button opens the “Settings” dialog box.

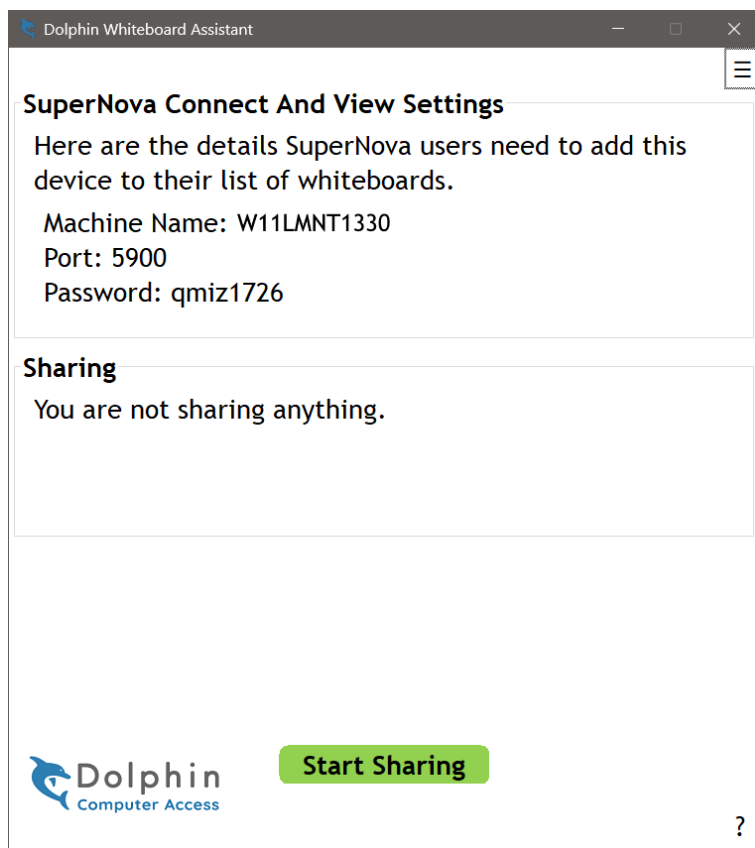


In the “Settings” dialog box, you can do the following:

- Set Port number. By default, this is 5900 and should only be adjusted if advised by your IT Administrator. The teacher and student must be using the same port number to make a successful connection.
- Select a border colour to highlight the application window being shared. This is only visible on the student’s device. This is optional and applies only when you choose to share a specific application window that is not maximised.

- Select a background colour to redact other windows that may appear when you share your screen. This is only visible on the student's device. This is optional and applies only when you choose to share a specific application window.
- Set a Password. This is a required field. You can choose to generate a random password or set your own password. The password will need to be shared with your students to enable them to successfully connect to your whiteboard. A password must be exactly eight characters in length and contain both letters and numbers.
- Enable Video Frame Support, which optimises performance when streaming, and is selected by default. You should only disable this feature if students are reporting poor viewing quality such as artifacts appearing on their screen.

Selecting the “OK” button will open the main Dolphin Whiteboard Assistant window. Here you will find the information your students need to connect SuperNova to the whiteboard and the “Start Sharing” button that begins the sharing session.



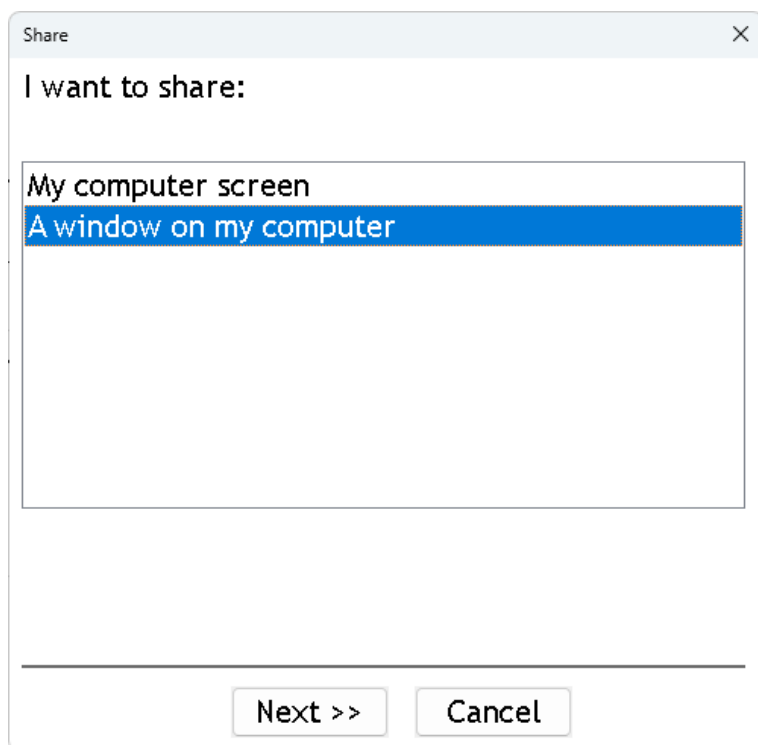
To learn more about sharing, see the section [How to start sharing your screen](#)

6. How to start sharing your screen

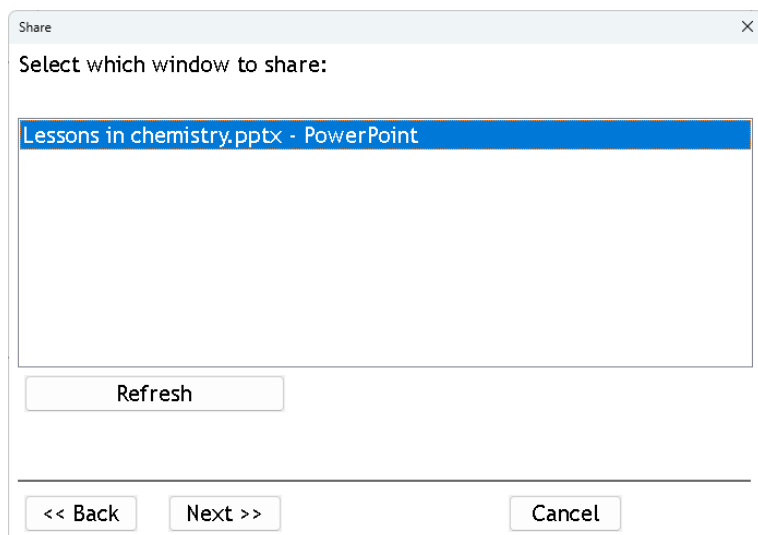
IMPORTANT: Before sharing your whiteboard, ensure the students using SuperNova have the information they require to connect to your whiteboard. You can learn about setting up SuperNova in the “Dolphin Whiteboard Assistant - Student Guide”.

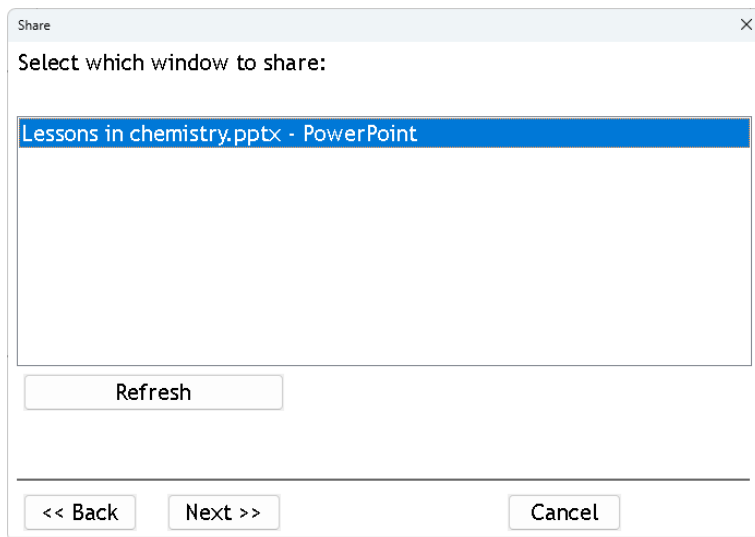
To share your screen, do the following:

1. From the Dolphin Whiteboard Assistant window, select the “Start Sharing” button.
2. Choose what you would like to share. You can choose to share your entire screen or only share a specific Window from your screen (e.g. a set of presentation slides).

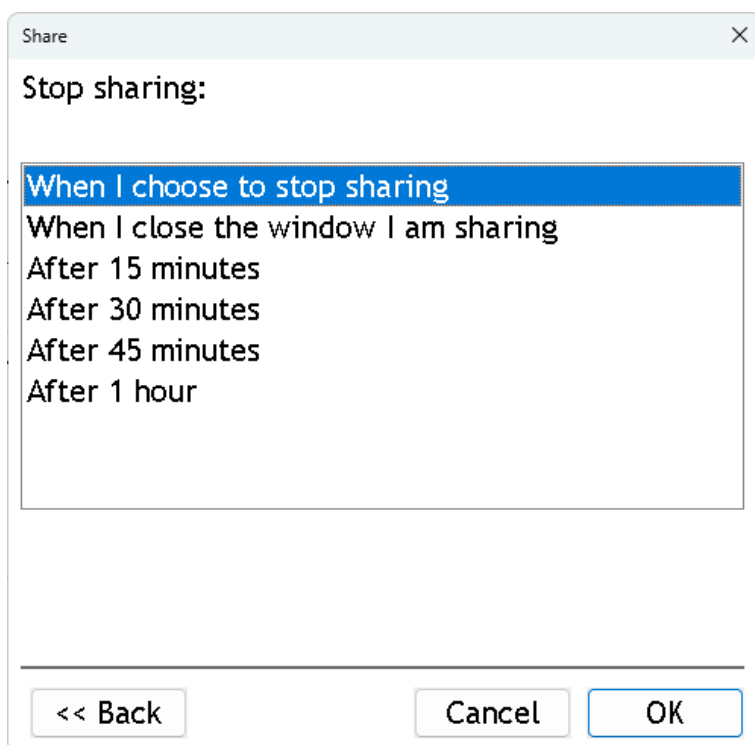


If you choose to share a specific window, you will be asked to select the window to share.





3. Select how you would like to stop sharing. Options include to stop sharing when you choose or automatically stop sharing after a set amount of time (e.g. after 15 minutes, 30 minutes, 45 minutes or 1 hour).



4. Choose “OK” to start sharing your screen.

Once you start sharing your screen, the “Sharing” section of the Dolphin Whiteboard Assistant will display a message to show that the screen is now being shared.

If you chose to use a highlight colour when sharing a specific window, the student will see a coloured border around the edge of the Window being shared. You can customise the border colour by selecting the settings button at the top right of the Dolphin Whiteboard Assistant window.

The Dolphin Whiteboard Assistant window will also show:

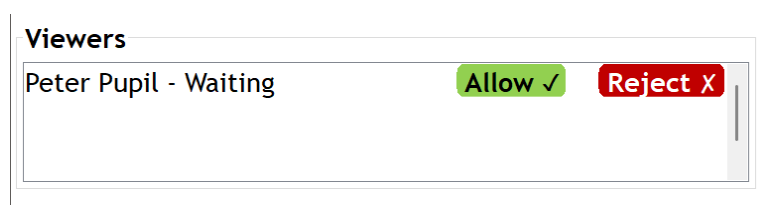
- The number of students that are actively viewing your screen through SuperNova in a coloured circle.
- The name of the Window which is being shared (if you chose to share a Window).
- The amount of time left before the sharing will automatically stop (if you chose to set a timer).

7. Additional sharing controls when using the Different Networks connection

When using the Different Networks connection method, you have additional controls over the sharing of your whiteboard. This is a similar concept to online meeting applications like Microsoft Teams or Zoom where you can make people wait in a virtual lobby before deciding whether to admit them into the meeting.

If the Dolphin Whiteboard Assistant is not the active window on your computer when a student tries to make a connection, the Dolphin Whiteboard Assistant icon will flash in the Windows Taskbar to get your attention. This indicates that at least one student is trying to connect to your whiteboard and that you need to act.

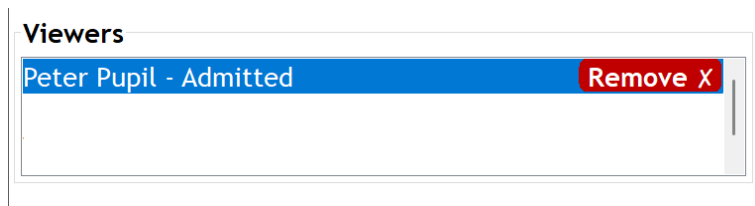
When a student makes a connection, their name will appear in the “Viewers” list in the main Dolphin Whiteboard Assistant window with their status showing as “Waiting”. This means they are now waiting to connect.



Next to this name and status text are two buttons. The green “Allow” button with the tick mark will let that student have a connection to the content you are sharing. The red “Reject” button with the cross next to it, will refuse a connection to that student. This enables you to enforce who has access to the shared content on your whiteboard.

For example, a student may have tried to connect to you by accident, so this lets you stop them accessing content that is not meant for them. Until you click “Allow” no content will be shared with that student.

Once you do allow a student to view your whiteboard, their status will change to “Admitted” and a new red “Remove” button appears next to them. Pressing this button at any point will remove their viewing of your whiteboard and stop content being shared with them.



To remove all students, select the “Stop Sharing” button. This is easier than individually going through each connection and selecting “Remove” if you have more than one student connected to your whiteboard.

8. How to stop sharing your screen

You can stop sharing your screen at any time by doing one of the following:

- Selecting the “Stop Sharing” button in the Dolphin Whiteboard Assistant window.
- Closing the Dolphin Whiteboard Assistant.
- Closing the Window that is being shared.
- If you set a timer, the screen sharing will automatically stop when the allotted time has passed.

Once sharing has stopped, students will be unable to view the contents of the whiteboard.

9. Further information for teachers

9.1 Online learning

Find out how to support your vision impaired students to get the most out of using Dolphin SuperNova by taking our online course [SuperNova for Educators Course](#) on the Dolphin Learning Zone. The course is CPD accredited and includes bite-sized lessons to learn about the key magnification, speech and braille features available with SuperNova and Dolphin ScreenReader.

9.2 Product Support

Visit the [Support pages](#) of the Dolphin website to find out how to get help if you are experiencing a technical issue with SuperNova or the Dolphin Whiteboard Assistant.

9.3 Compatible versions of SuperNova

Dolphin Whiteboard Assistant Version 2.0 works with SuperNova 24.01 and later, but to use Different Networks requires SuperNova 25.01 or later.

If you are supporting a student who is using a previous version of SuperNova, please contact the [Dolphin Sales Team](#) to arrange an upgrade to the latest version of SuperNova.

To view the SuperNova Version Number:

1. Open the SuperNova Control Panel.
2. Open the “Help” menu (ALT + H).
3. Select “About”.